

The Crosby Arboretum

Mississippi State University Extension Service

Quarterly News Journal

Fall 2015

29.4

A WALK THROUGH THE CROSBY ARBORETUM ARCHIVES: STUDYING HISTORY

By Mr. Will Sullivan

As someone once told me, studying history in the raw is both as exciting and perplexing as unraveling an animal's trail in the woods. Add to that a trip down memory lane for part of this study, for I am in the process of trying to catalogue the historical files of Crosby Arboretum. I find myself constantly cutting the trails of Lynn Crosby Gammill, Ed Blake, Dr. Sidney McDaniel, Chris Wells, and Bob Brzuszek.

There are three numbered file drawers in the Crosby Arboretum archive room that are labeled as containing site history files, in addition to other drawers that have no precise indication as to their contents. I haven't had the courage to take a gander at those other drawers yet as I am only through one-and-a-half of the drawers and I have been at this task for over a year.

The problem with reading through history in this form is that many of the files do not have labels (having lost them long ago), and those that do often contain material that seems to not have even the remotest connection with the label. The unlabeled files often contain material that appears to have no connection with anything else nearby in the file.

Am I tearing my hair out at this confusion? Absolutely not! This is history! Each document I scan, and sometimes read in detail, is absolutely fascinating. The careful documentation by Sidney McDaniel and Chris Wells of the various plant forms they would find on the "Strawberry Farm" site that became what we know today as the Crosby Arboretum is actually fascinating – that is, when I can connect common names with the Latin names (it's all Greek to me). Sometimes Sidney and Chris have made it easy for me, and included both the common as well as the formal names.

Then I encounter the discussion of that little lake in which I take so much joy fly fishing in for the kids during the Piney Woods Heritage Festival and Wildlife Day student field days. Painstaking detail went into the planning of the Piney Woods Pond, part of the Arboretum's Aquatic Exhibit. There is even a discussion and drawing of what could happen at the weir in worst case and best case scenarios.

There is the dialogue of whether to eventually dredge the lake, of what will happen if it isn't dredged and how the Pinecote Pavilion will be left high and dry without any vista for visitors if the water body is just allowed to "silt in". This



Author Will Sullivan strolls with botanist Chris Wells at June 1991 Memorial Honor Program.

discussion has importance because this arboretum is different from others. It is not simply a "plant zoo." The Crosby Arboretum is a living and growing and changing collection of various ecologies found within the lower Pearl River Drainage Basin. But obviously some things do have to remain the same for visitors to be able to relate to the site over time. Pinecote Pavilion is one of those things, and arguably, the lake is a vital part of the Pinecote Pavilion experience. This discussion will continue over time as well.

Those people whose trails I have cut while walking the trail left in these files were the ones who made the initial decisions about the form the arboretum would take. What is amazing is to not only read of their dreams for the arboretum in those files, but to see today how close they have come, given the task they set for themselves.

That is what always makes raw history so interesting. The student can feel and hear the people in the history through the tracks they made in what was essentially a trackless wilderness, one formed from their separate hopes and dreams. Yet, these people were able to merge those slightly divergent hopes and dreams into what became the Crosby Arboretum, a place that these files continue to reveal is unique among public gardens.



Mr. Will Sullivan is the former managing editor of the Picayune Item and has been a constant supporter and friend of the Crosby Arboretum from since its establishment.



The Crosby Arboretum Mississippi State University

A regional arboretum representing the native flora of the Pearl River Drainage Basin in Mississippi and Louisiana.

Picayune, Mississippi, USA

Director's Notebook:

The Crosby Arboretum was awarded a \$15,000 **Tourism Development Grant** from the Mississippi Development Authority through Visit Mississippi to promote visitation, and the Crosby Arboretum Foundation has received a \$21,938 **Five Star and Urban Waters Restoration Grant** from the National Fish and Wildlife Foundation in partnership with Southern Company that will fund the construction of a new Quaking Bog Educational Exhibit in the South Savanna.

In July, MSU professor of botany **Dr. Sidney McDaniel**, who conducted the Arboretum's site and natural areas inventory, was the recipient of the Tom Dodd Jr. Award of Excellence at the 32nd annual Cullowhee Native Plant Conference at Western Carolina University in Cullowhee, North Carolina. The award recognizes outstanding contributions in conservation, understanding, and promotion of native plants in North America.

This fall, our Bugfest and Piney Woods Heritage Festival will mark the unveiling of the first two posters in a series designed by Mississippi State University graphic arts student **Kimberlin Singletary** in the service learning project her class participated in through the MSU Center for the Advancement of Service-Learning Excellence (CASLE). We are thrilled to now have these professional materials to promote our large public events.

In August, **Mr. D. L. Wesley** of Foxworth, Mississippi, donated a bee colony to the Arboretum. Mr. Wesley is a member of the Mississippi Beekeepers Association and a participant in our educational events. Our new hive is thriving, and is located in the South Savanna Exhibit.

- Patricia Drackett, Director

The Crosby Arboretum, MSU Extension Service



Gail Barton, past president of the MS Native Plant Society, and Director Pat Drackett accepted the Tom Dodd Jr. Award for Dr. Sidney McDaniel at the Cullowhee Native Plant Conference.



Britton Stumbaugh and Mitchell Morgan collect insects at night in May at the Arboretum. September 18, will provide another opportunity for night insect collecting at our Bugfest event.

Curator's Corner:

There is a certain event that takes place every fall, early in the season, when the temperatures drop just enough for the first time that you know fall has finally come. It is almost like the changing of the guard. Time to put away the pool passes and insect repellent and pull out the pumpkin pie spice and garden rakes. For me personally, it signals the start of college football along with a moment of garden recuperation after long periods of high summer temperatures.

Fall provides us with such colorful imagery. Landscapes change from summery greens to hues of yellows, apple reds, and burnt orange. Have you ever wondered what makes leaves turn in the fall? It has to do with cooler temperatures, shorter days, and the breakdown of chlorophyll. As the hours of sunlight shorten and air begins to dry and cool, the leaf starts a process of shutting-down or abscising. Photosynthesis comes to a seasonal halt and chlorophyll begins to break down, losing the green pigment in the leaf. Chlorophyll acts as a filter, masking the actual colors of the leaf. As this green pigment is removed, those beautiful fall hues of yellow, red, and orange are revealed. Of course, the temperate regions of North America are better known for rich fall color; but, here in south Mississippi winners in the fall color category include Blackgum, Elliott's Blueberry, Ironwood, Winged Sumac, Persimmon, and Bald Cypress.

We hope that you will join us this fall for festivities such as Bugfest in September, Halloween Fun in October, and the 13th annual Piney Woods Heritage Festival in November.

- Jill Diamond Mirkovich, Senior Curator
The Crosby Arboretum, MSU Extension Service



The Crosby Arboretum Mississippi State University

A regional arboretum representing the native flora of the Pearl River Drainage Basin in Mississippi and Louisiana.

Picayune, Mississippi, USA

Plant Profile: Bald Cypress

Taxodium distichum



The Bald Cypress (*Taxodium distichum*) is one of the South's most robust native trees as it has much to offer each season in structure, color, and functionality. This deciduous conifer can reach a height of 120' which should be taken into consideration when implementing into the home landscape. Tolerant of high winds and floodwaters, this tree is noted for having a long life span. Bald Cypress is a wet-loving plant that is found in swampy areas and along bayous where it aids in erosion control, trapping sediments in floodwaters. Unlike *T. distichum*, the Pond Cypress (*Taxodium ascendens*) cannot tolerate flood conditions and is mostly found in low depressions or shallow ponds, where it tends to naturalize.

The Bald Cypress is well known for its cypress knees which are vertical extensions of the root system. Botanists have long time debated over functionality of the cypress knees. One theory suggests that these specialized roots act to facilitate aeration during periods of flooding. Another concept is Cypress trees established in wetter soil develop cypress knees as a form of structure. In other words, the knees help anchor the tree in highly saturated soil. When planted on higher ground, the Bald Cypress is adaptable to drier conditions and will not form cypress knees.

Providing high wildlife value, the Bald Cypress provides nesting sites for numerous coastal birds. Seeds are eaten by squirrels, wild turkey, and waterfowl.

Upcoming Volunteer Meetings:

Friday, September 4, 11 a.m. to 1 p.m.

Friday, October 23, 11 a.m. to 1 p.m.

NATIVE PLANTS WITH FALL INTEREST

Bald Cypress (*Taxodium distichum*)

Blue beech (*Carpinus caroliniana*)

Eastern Persimmon (*Diospyros virginiana*)

Joe-pye weed (*Eutrochium fistulosum*)

Oneflower honeycombhead (*Balduina uniflora*)

Possumhaw Holly (*Ilex decidua*)

Roughleaf goldenrod (*Solidago rugosa*)

Swamp Titi (*Cyrilla racemiflora*)

Water Cowbane (*Oxypolis filiformis*)



Grounds manager **Terry Johnson** has completed two handsome cypress bridges in the Swamp Forest Educational Exhibit, along with Arboretum staff member **Jarrett Hurlston**, and volunteers **Tom Heim** and **Paul Breland**. The northern section of the Swamp Forest trail is now open!

60th ANNUAL ED MARTIN LANDSCAPE

SYMPOSIUM, October 21, 2015, 9:00 a.m. to Noon, Bost Auditorium, Starkville (MSU campus). The event is sponsored by the **MSU Department of Landscape Architecture** and the **Garden Clubs of Mississippi**, to teach the public about landscape architecture and gardening. For speaker and program information, and registration details visit: http://lalc.msstate.edu/workshops/martin_symp/ or call (662) 325-3012.

27th ANNUAL SOUTHERN GARDEN

SYMPOSIUM & WORKSHOPS, October 23 & 24, 2015, St. Francisville, LA. The symposium seeks to preserve and commemorate gardening in the Deep South through lectures, workshops, and a tour of historic Afton Villa gardens and Rosedown gardens. For more information or to pre-register (required), call (225) 635-3738 or visit <http://www.SouthernGardenSymposium.org/>.

DONATIONS AND MEMORIALS

Donations were made this year for the planting of trees and the construction of benches in memory of **Charles W. Hunger, Jr., Chase Raymond, John Dick, Dr. John Green, and Walter Louis Guillot IV**. An honor tree for **Pat Drackett** was designated by Ruth Cook this past November. Information on Memorial and Honor Trees, including a recommended species list, is available on the arboretum website. We are grateful to all who have chosen to make a lasting donation to the Crosby Arboretum in memory of, or to honor, family and friends.



Reflections of fall mirrored in the Piney Woods Pond in November of 2014. Mr. Will Sullivan (bottom right) demonstrates the art of fly fishing for Piney Woods Heritage Festival.

Crosby Arboretum Gift Shop



Fall is a great time to come visit our gift shop! We have a lot of new books in stock to choose from. New greeting cards from Botanic Works, along with unique note cards designed and made by our very own Crosby Arboretum Volunteers, hats, coffee mugs, walking sticks, locally made pottery, fine nature themed dish wares and much more can be found in The Crosby Arboretum Gift Shop.

-Kim Johnson

The News Journal is a quarterly publication of The Crosby Arboretum, Mississippi State University Extension Service. Journal subscriptions may be obtained with membership at the Arboretum. Printed on recycled paper with $\geq 30\%$ postconsumer waste recycled fiber. Journal may be received electronically if desired.

Please address correspondence to:

Jill Mirkovich, Editor
 jill.mirkovich@msstate.edu
 The Crosby Arboretum
 P.O. Box 1639, Picayune, MS 39466

*Programs of Mississippi State University Extension Service are open to all people, without regard to race, color, religion, sex, national origin, age, disability, veteran status, sexual orientation, or group affiliation. If you have questions regarding MSU Extension's non-discrimination policies, contact: Judy Spencer, Chief Human Resources Officer, P.O. Box 9603, Mississippi State, MS 39762, phone (662) 325-3713. MSU Extension will provide reasonable accommodations to persons with disabilities or special needs. Please contact the Crosby Arboretum office at (601) 799-2311 or s.lowe@msstate.edu prior to a program or event to request reasonable accommodation.

Membership Application

All contributions are tax deductible to the extent allowed. For more information call: (601) 799-2311 or print form online.

_____	Student (send copy of student i.d.)	\$ 15.00
_____	Individual	30.00
_____	Family	40.00
_____	Donor	100.00
_____	Patron	250.00
_____	Benefactor	1,000.00
_____	Business	
_____	_____ Sweetgum	100.00
_____	_____ Sassafras	250.00
_____	_____ Live Oak	500.00
_____	_____ Bigleaf Magnolia	1,000.00

Name _____

Address _____

City _____

State _____ Zip _____ Phone _____

Renewing? Memberships are for one year.



STATE
 MISSISSIPPI STATE
 UNIVERSITY
 EXTENSION

The Crosby Arboretum

Mississippi State University

P.O. Box 1639

Picayune, MS 39466-1639

Crosby Arboretum Program Schedule

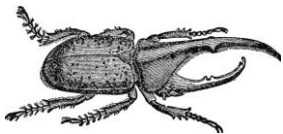
September – October 2015

September 2015

Our Fall Gallery Exhibit: PHOTOGRAPHY BY DOREEN LEONE



Please visit the Crosby Arboretum gallery this fall to view the exhibit by photographer **Doreen Leone**. Mrs. Leone, a resident of the Carnes community south of Hattiesburg, has been intrigued by photography from a young age. Passionate about capturing a moment of beauty or a freeze-frame in time, Doreen takes every opportunity to photograph things that catch her attention. With a deep and abiding love of nature, Doreen's photography captures complex images that are as real as the subject in her focus. The exhibit will run through November 30. An opening event will take place on Saturday, August 29, and all are welcome to come and enjoy light refreshments.



BUGFEST

Friday, September 18, 10 a.m. to 10 p.m.

Saturday, September 19, 10 a.m. to 3 p.m.

Bring the family out to the Arboretum for this two-day event focused entirely on BUGS. On Friday, from 10 a.m. to 2 p.m., local schools and homeschool groups are invited to come and explore the world of Entomology with insect collecting, identification, and more. Student admission \$2; no charge for teachers and chaperones until 6 p.m. On Friday, 6 to 8 p.m., children will enjoy entomology-based activities on the Buggy Midway. Night collecting begins at dusk. Bring flashlights or a headlamp! Midway is open Saturday, 10 a.m. to noon. New Orleans Audubon Institute's Bugmobile presents in the afternoon. Friday evening and Saturday entry fees: \$5 for adults, \$2 for children, members are free.

FALL ARRANGEMENTS FOR PLANTERS

Saturday, September 26, 10:00 to 11:30 a.m.

This hands-on workshop will demonstrate how to create beautiful planted containers for the fall season. Join the Arboretum's Senior Curator, **Jill Mirkovich** in creating your own fall planter using the season's brightest annuals and perennials. Discussion and tips on selecting containers, arranging plants, and care of planters will be presented. Bring your own medium sized plant container. A limited selection of planters will be available for purchase. Plants and potting soil will be provided. Cost for members \$10; non-members \$15. Call 601-799-2311 to register by Wednesday September 23. Space is limited.

FALL WILDFLOWER FIELD WALK

Saturday, September 26, 1 to 2 p.m.

Fall is a beautiful time of year for a walk through the Arboretum. In a walk around the Arboretum grounds led by Director **Pat Drackett** you will learn about the flora of our region and how to incorporate natives in your own backyard. Bring your camera and walking shoes. Free to members; \$5 non-members \$5. Register by September 25.

October 2015

RUN BABY RUN 5K

**Saturday, October 3, Registration opens at 7 a.m.
Run start time 8 a.m.**

Enjoy an early morning 5K run through the Crosby Arboretum's exhibits! Proceeds for this event will go directly to Teen Challenge of Poplarville, a non-profit organization that provides faith-based residential care to young people and adults who struggle with life-controlling problems. Pre-register online at www.ACTIVE.com. Registration fee is \$25 and includes site admission. For more information call (601) 795-8063 or contact Erica Sloan at tcofms.ericah@hotmail.com.

TABLE CENTERPIECE WORKSHOP

Saturday, October 10, 10 a.m. to 12 noon

The table becomes the focal point of our family lives when we take time to dine together. Create a place of beauty to enjoy food and flowers, the Earth's gifts, in this hands-on workshop. Learn how to make a table arrangement, gaining knowledge in the techniques of how to work with live floral materials. This workshop will be led by MSU Extension Professor **Dr. James DelPrince**. Bring pruning shears, scissors, and paring knife with you. \$15 per person. Registration deadline: Sunday, October 4.

Crosby Arboretum Program Schedule

October – November 2015

October 2015 (continued)

Fall Plant Sale

Friday/Saturday, October 16 & 17
10 a.m. to 3 p.m. Members Admitted at 9 a.m.

Grab a cart and choose from a great selection of native trees, shrubs, and perennials at our Fall Plant Sale. Knowledgeable staff and volunteers will be on hand to assist with plant questions and offer advice on plant selection for your site. **Free Admission.** Sale located in Greenhouse area. Please use our Service Road entrance.

MISSISSIPPI'S NATIVE MILKWEED SPECIES

Saturday, October 10, 1 to 2 p.m.

Mississippi has more than a dozen native milkweeds (*Asclepias*), larval food plants of the monarch butterfly (*Danaus plexippus*). Arboretum director **Pat Drackett** will introduce you to these species, their preferred habitats and suitability for garden use, propagation, and sources. Members free, \$5 non-members. Register by October 9.

FAIRIES, PUMPKINS, AND Halloween Fun!

Saturday, October 31

Fairy Crown Workshop 10 a.m. to 12 noon

Learn how to make a crown of flowers or greenery, suitable to wear for your Halloween costume! Open and encouraged for young people 6 years and up, \$5 per person. Registration must be received and paid by Wednesday, October 28.

Painted Pumpkins 12:30 to 2:00 p.m.

Design a painted pumpkin at the Arboretum. Cost \$6 for non-member, \$4 for members.

Pumpkin Carving 2:30 to 4:00 p.m.

Grab a pumpkin and let's get carving! Have you ever wondered how to create the best jack-o-lantern on the block?! We will provide tools, scary and not-so-scary stencils, and instruction. Cost \$6 for non-members, \$4 for members. One pumpkin per person.

SPOOKY WOODS 5 to 7 p.m. FREE EVENT!

What lurks in the deep, dark woods of the Crosby Arboretum? Dare to find out in this fun family trick-or-treat event. Come in costume and bring your flashlight!

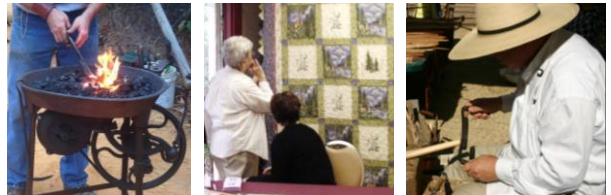
November 2015

WINTER BIRDING

Saturday, November 14, 10 to 11 a.m.

You might think the winter months are not very exciting for birding, but fortunately we still have an abundance of birds in the area during the winter months. Learn where to look, what to expect, and how to identify winter species from avid birder and author **Susan Epps**. Members free, \$5 non-members. Please register by November 13.

13TH ANNUAL PINEY WOODS HERITAGE FESTIVAL



Friday, Nov. 20, 10 to 2 p.m. (Schools)

Saturday, Nov. 21, 10 to 3 p.m. (Public)

Celebrate the early days of the Piney Woods in this annual festival featuring exhibits and demonstrations of traditional skills such as blacksmithing, quilting, spinning, basket-making, and more. Friday is open to preregistered school groups (\$2 per child), free to teachers/chaperones. Saturday features live music performances. Saturday admission, adults \$5, children \$2. Members free.

Reservations: Call the Arboretum office at (601) 799-2311 for questions, and to make program reservations.

Physical Address: 370 Ridge Road, Picayune, MS 39466 (Note: GPS directions to the Arboretum are often inaccurate; please see our website for detailed directions.)

Hours of Operation: Wednesday - Sunday, 9 a.m. to 5 p.m.

www.crosbyarboretum.msstate.edu



Programs of Mississippi State University Extension Service are open to all people, without regard to race, color, religion, sex, national origin, age, disability, veteran status, sexual orientation, or group affiliation. If you have questions regarding MSU Extension's non-discrimination policies, contact: Judy Spencer, Chief Human Resources Officer, P.O. Box 9603, Mississippi State, MS 39762, (662) 325-3713. MSU Extension will provide reasonable accommodations to persons with disabilities or special needs. Please contact the Crosby Arboretum office at (601) 799-2311 or s.lowe@msstate.edu prior to a program or event to request reasonable accommodation.